



The Leader in Polar Adventures

ARCTIC 2025

Northwest Passage

The Legendary Arctic Sea Route



ULTRAMARINE

DESIGNED TO GO BEYOND

Contents

- 1 Overview
- 2 Itinerary
- 5 Arrival and Departure Details,
and International Flight Planning
- 7 Your Ship
- 9 Included Activities
- 11 Adventure Options
- 12 Departure Dates
- 13 Inclusions and Exclusions
- 14 Your Expedition Team
- 15 Meals on Board
- 16 Possible Excursions
- 19 Packing Checklist



Overview

Northwest Passage: The Legendary Arctic Sea Route

Winding your way through the icy channels of the legendary Northwest Passage is history brought to life during this expedition in the Canadian High Arctic and Greenland. On this compelling 17-day journey aboard our game-changing new vessel *Ultramarine*, passengers retrace the steps of the intrepid Franklin Expedition, which left the shores of England in 1845 in search of the last unexplored section of the Northwest Passage—only to become permanently icebound. Its discovery more than a century and a half later by Norwegian Roald Amundsen was a much-celebrated moment in polar history.

On *Ultramarine*, guests benefit from two twin-engine helicopters that will provide spectacular aerial views of the Arctic landscape, the most extensive portfolio of Adventure Options in the industry, more outdoor wildlife viewing spaces than any other expedition ship its size, and 20 quick-launching Zodiacs to get you closer to ancient glaciers, dramatic fjords and towering icebergs. Explore colorful Inuit villages, and shop for traditional Inuit handicrafts. Hike the endless Arctic backdrop and marvel at the vast, colorful tundra. Keep your eyes peeled for the elusive and majestic creatures that make their home in this wilderness, such as whales, walrus, muskoxen and polar bears. Come aboard *Ultramarine* for this immersive journey along the legendary Arctic sea route, and return home with memories permanently etched in your heart.

EXPEDITION IN BRIEF



Experience highlights of Greenland and the Canadian Arctic



Explore colorful Greenlandic villages and shop for traditional Inuit handicrafts



View iconic Arctic wildlife, such as whales, walrus and muskoxen



Hike the colorful tundra



Cruise in a Zodiac to get up close to glaciers, fjords, icebergs and more



Enjoy flightseeing on one of *Ultramarine's* two twin-engine helicopters.



Itinerary

DAY 1 | ARRIVE IN REYKJAVIK, ICELAND

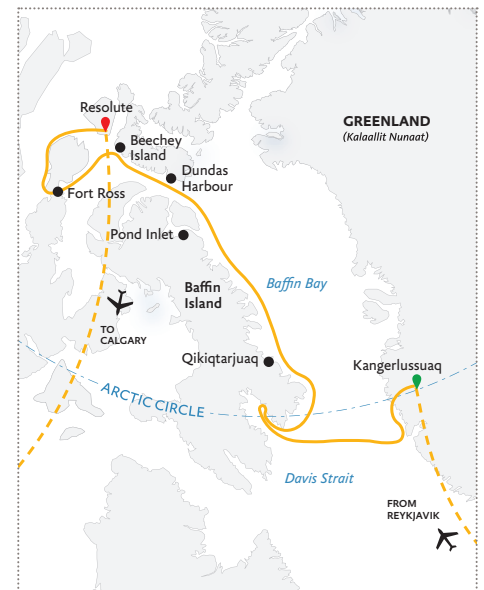
Arrive in the Icelandic capital and make your way to your included hotel. You will have the rest of the day to explore the city on your own.

DAY 2 | FLY TO KANGERLUSSUAQ, GREENLAND, AND EMBARK

After breakfast, board your charter flight to Kangerlussuaq, a small community nestled deep inside a 118 mile (190 km) long fjord. Enjoy your first Zodiac ride as you're transferred from shore to ship. Out on deck, take in your new surroundings before you set sail on your Arctic adventure.

DAYS 3 & 4 | EXPLORING WEST GREENLAND

Cruising around the remote regions of Greenland and the Canadian Arctic aboard *Ultramarine*, the newest ship in our fleet, you'll navigate the same icy inlets, channels and bays that fascinated legendary explorers of long ago. Designed to give polar adventurers unprecedented access to the hardest-to-reach places on the planet—and equipped with two onboard twin-engine helicopters for unparalleled access to areas only Quark Expeditions can bring you—this one-of-a-kind ship will take you beyond the familiar in polar exploration. Throughout your journey, your Expedition Team will keep an



NORTHWEST PASSAGE
The Legendary Arctic Sea Route
Onboard *Ultramarine* ———
Flights from Reykjavik / to Calgary from the ship - - -

eye toward immersing you in the best the Arctic has to offer at the top of the world. Locals call Maniitsoq the Venice of Greenland, as it's situated in an archipelago intersected by natural canals. Soaring, snow-capped mountains surround the small, rocky town, whose name means "the uneven place." Playful humpback whales spend summer in the waters around here.

The Greenlandic capital of Nuuk is a haven for history and culture lovers. See for yourself the unique and thriving culture of contemporary Greenland that mingles the ancient with the modern in surprising and wonderful ways. Stroll down to the waterfront to see the Hans Egede Church and Hans Egede statue, named for the missionary who established the settlement in 1728. Marvel at the famous remains of 500-year-old fully dressed mummies, discovered under a rock outcrop in 1972 by two brothers out hunting, at the Greenland National Museum. The Nuuk Art Museum and Katuaq Culture Centre are also worth visiting.

DAY 5 | CRUISING

Say goodbye to Greenland's shores as you traverse the Davis Strait in pursuit of the Canadian Arctic. Presentations by on-board experts will prepare you for the adventures that lie ahead.

DAYS 6 - 15 | EXPLORING CANADA'S HIGH ARCTIC

Visit towering fjords, historical sites and Inuit communities as you follow in the footsteps of famous explorers from long ago in the Canadian High Arctic.

At the southern tip of the Cumberland Sound, you'll visit Cape Mercy, which was named by British explorer John Davis (yes, he of the Davis Strait), who sailed through it in 1585. This is the site of an old Distant Early Warning Line installation, dating back to the Cold War. These and many other stations were set up to detect Soviet bombers. It's an ideal spot to go ashore for a hike.

As icebergs travel down the Davis Strait, they're naturally trapped at Qikiqtarjuaq (formerly known as Broughton Island). The icy waters here are also home to

ring and harp seals. A hike up to the hilltop inuksuk rewards with spectacular views of the community. Inuksuks are stone figures or cairns that traditionally call attention to the location for navigation, abundant harvesting or spiritual significance.

Cruising further north along the mountainous east shore of Baffin Island, we'll approach Isabella Bay, an important summer and fall feeding area for the largest concentration of bowhead whales in Canada. Bowheads are a truly a remarkable arctic leviathan that research has revealed may live more than 200 years of age - the oldest mammal.

At the northern tip of Baffin Island, near the eastern entrance to the Northwest Passage, is the Inuit hamlet of Pond Inlet, surrounded by scenic mountains, fjords, glaciers and icebergs. Many in the community still follow a nomadic lifestyle and hunt for their food.

At the top of Baffin Island sits Lancaster Sound, a true arctic oasis. Known by the Inuit and their predecessors for



thousands of years, this channel and the surrounding lands are extremely rich in wildlife and history, both indigenous and European.

The area around Lancaster Sound affords several hiking opportunities. At Dundas Harbour, on Devon Island, you'll visit an abandoned beachside outpost of the Royal Canadian Mounted Police. At nearby Croker Bay, cruise in a Zodiac (at a safe distance) along the face of an actively calving glacier. Your Expedition Team will also keep its eyes peeled for walrus that are known to visit the bay. Farther west, some of the best ancient Thule remains in the Arctic are at Radstock Bay, beside the soaring Caswell Towers.

At the western end of Devon Island, the windswept Beechey Island is steeped in history. Named after famed British explorer Frederick William Beechey, it's a Canadian National Historic Site. You'll visit the small marked graves of three crew members who died during Sir John Franklin's tragic 1845-46 expedition. Over 150 years later, Roald Amundsen

landed here in 1903, during the first successful voyage by ship through the Northwest Passage.

Sailing down the east coast of Somerset Island, you may be fortunate to spot beluga whales and if you're very fortunate, narwhals, as they feed at Creswell Bay. An Important Bird Area, the bay also attracts such species as black-bellied plovers, king eiders and white-rumped sandpipers. You'll also have time to explore Fort Ross, where the Hudson's Bay Company established a now-abandoned trading post in 1937. At the midpoint of the Bellot Strait, the narrow channel that separates Somerset Island from mainland North America, you'll reach the northernmost area of the continental landmass, Zenith Point.

DAY 16 | DISEMBARK IN RESOLUTE, CANADA & FLY TO CALGARY

After disembarking in Resolute, you'll be transferred to your charter flight to Calgary, where you'll spend the night at your included hotel.

DAY 17 | DEPART CALGARY

Today, make your way to the airport to catch your homeward flights, or spend the day exploring this unique Western Canadian city.











EXPEDITION SPIRIT

Embracing the unexpected is part of the legacy—and excitement—of expedition travel. When traveling in extremely remote regions, your Expedition Team must consider the sea, ice, wildlife, and weather to guide the route and itinerary details. This itinerary is a tentative outline of what you may experience on this voyage; please be aware that no specific itinerary can be guaranteed. By the same token, wildlife encounters as described are expected, but not guaranteed. Your Expedition Team will use their considerable experience to seek out wildlife in known habitats, but the presence of any particular species of bird or marine wildlife is not guaranteed.





Arrival and Departure Details, and International Flight Planning

		 PM 		  PM 	
	DAY 1	DAY 2	EXPEDITION DAYS	DISEMBARKATION DAY	FINAL DAY
	<i>International flight in*</i> Arrival and hotel night	Charter flight to embarkation point and embarkation	On ship or landing days	Disembarkation, charter flight and hotel night	Leave hotel <i>International flight onward</i>
<p>* Arrive anytime on Day 1 or earlier. Day 1 includes an optional briefing.  <i>International flights are not included in the cost of the voyage.</i></p>					

Arrival Day and Embarkation

DAY 1 — ARRIVING IN REYKJAVIK

You may arrive in Reykjavik at any time during Day 1 of the itinerary and make your own way to the included hotel, near the airport.

On arrival at the hotel, you will receive a welcome letter outlining the departure information for the following day's flight. An agent representing Quark Expeditions® will be available in the lobby of the hotel this evening to answer any questions about the charter flight(s) scheduled for the following morning.

DAY 2 — CHARTER FLIGHT AND EMBARKATION IN KANGERLUSSUAQ

Your flight to the Arctic is expected to depart from Reykjavik to Kangerlussuaq on Day 2 of the itinerary in the morning. The scheduled flight time will be communicated in your welcome letter, and you will be transferred from your hotel to check in at the airport. Upon arrival in Kangerlussuaq, you will be transferred to the ship by Zodiac.

PLEASE NOTE

There is a strict luggage weight limit on checked luggage and cabin baggage on the flights between Reykjavik and Kangerlussuaq / Resolute and Calgary. There is NO option to pay for additional luggage.

You will find in your final documents:

- › Luggage weight restrictions on charter flights
- › Hotel information and check in time
- › Charter flight time to embarkation point
- › Embarkation plan
- › Departure charter flight time

Final Day and Departure

DISEMBARKATION IN RESOLUTE AND CHARTER FLIGHT

Your ship is scheduled to arrive in Resolute in the morning. After breakfast, and once the ship has anchored, you will have time to bid farewell to your Expedition Team and shipmates before taking one last Zodiac ride to shore. After disembarkation, you will be transferred to the airport for the return charter flight to Calgary.

DEPARTING FROM CALGARY

Upon arrival in Calgary, there will be a group transfer to your included post-expedition hotel. After breakfast the following morning, you may make your way to the airport to connect with your homeward flight, or stay longer if you have booked additional accommodation.

Arrival and Departure Transfers

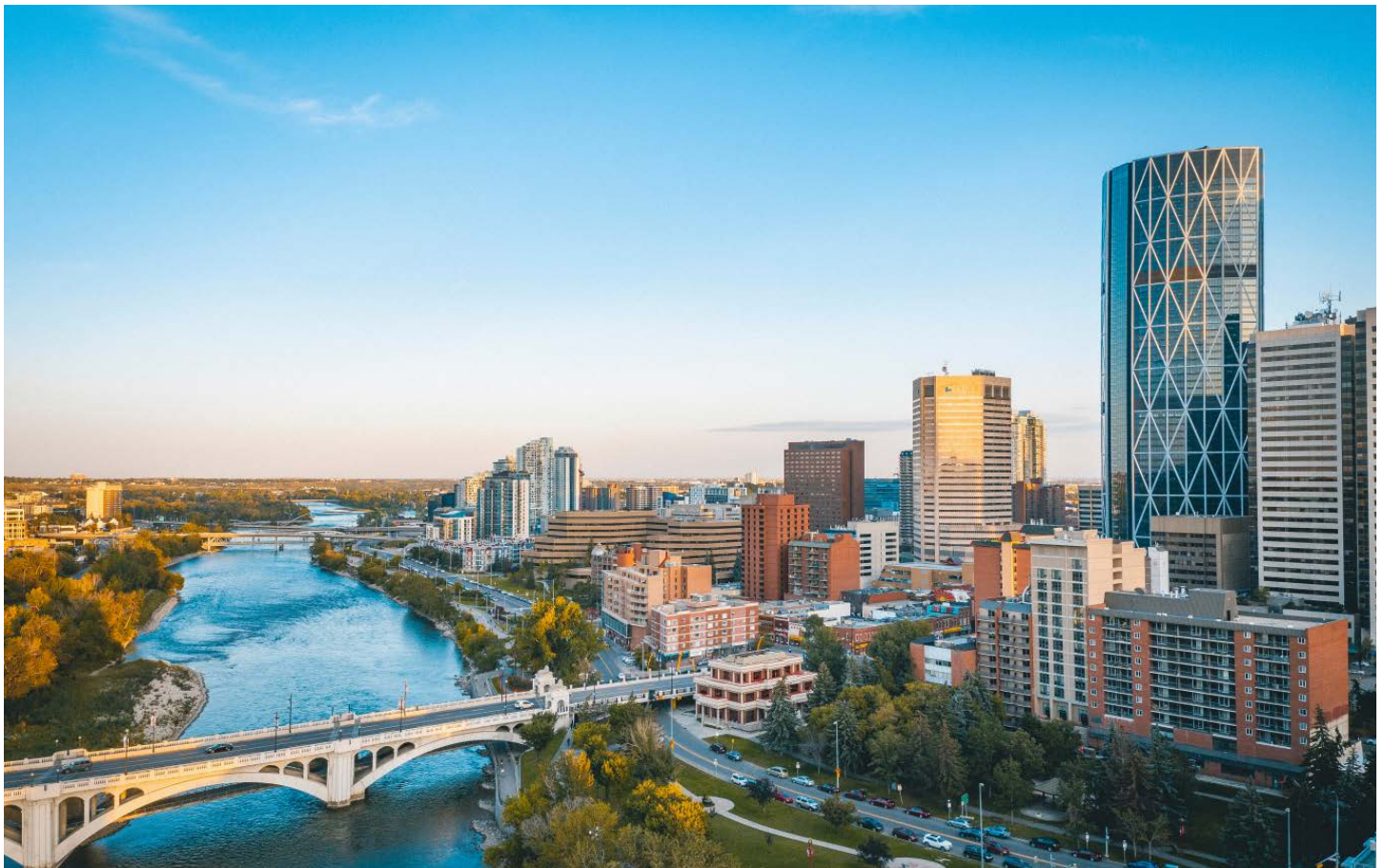
REYKJAVIK /CALGARY AIRPORT TRANSFERS

Arrival and departure transfers in Reykjavik /Calgary are not included; If you require a transfer, you will need to arrange your own transportation.

PLEASE NOTE

Included Hotel Accommodations:

Your included accommodation begins on Day 1 of your itinerary, and the specific hotel(s) will be indicated in your final voyage confirmation. If you are arriving prior to Day 1 of your expedition or are staying after the disembarkation day and would like to extend your stay, you can book directly with the hotel or through a third party. Because this voyage starts and ends in different cities, guests will not be able to leave extra luggage behind at their designated hotel for Day 1.





Your Ship

ULTRAMARINE

The newest ship in our fleet, *Ultramarine* is designed to go beyond the familiar in polar exploration, to immerse guests in parts of the Polar Regions where few humans have ever set foot.

Equipped with two twin-engine helicopters and 20 quick-launching Zodiacs, *Ultramarine* offers the most off-ship adventure activities in the industry. Guests can enjoy two restaurants (Balena and Bistro 487), Tundra Spa, a sauna-with floor-to-ceiling windows, spacious suites and abundant wildlife-viewing spaces. *Ultramarine* also features advanced sustainability systems—which exceed all industry standards.

Ultramarine is perfectly designed to deliver the ultimate polar expedition experience.

SHIP SPECIFICATIONS:

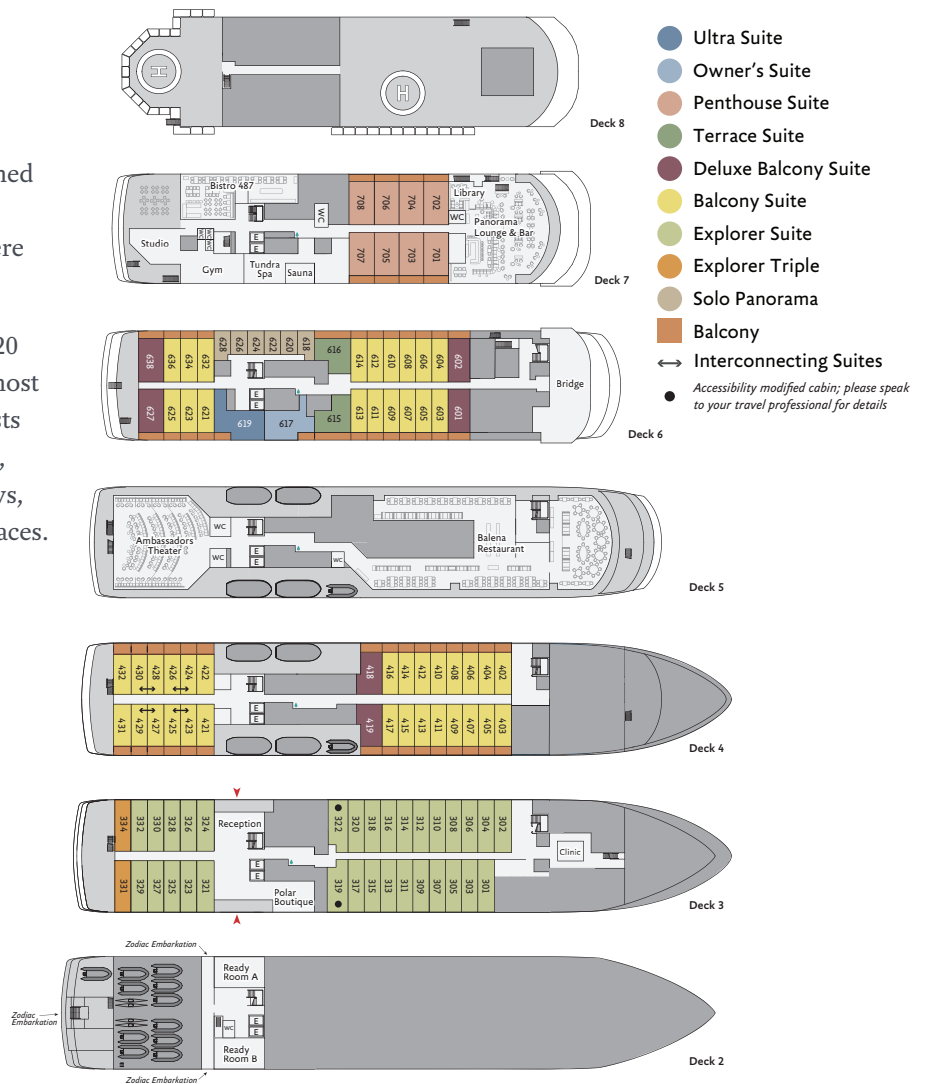
Staff and Crew: 140

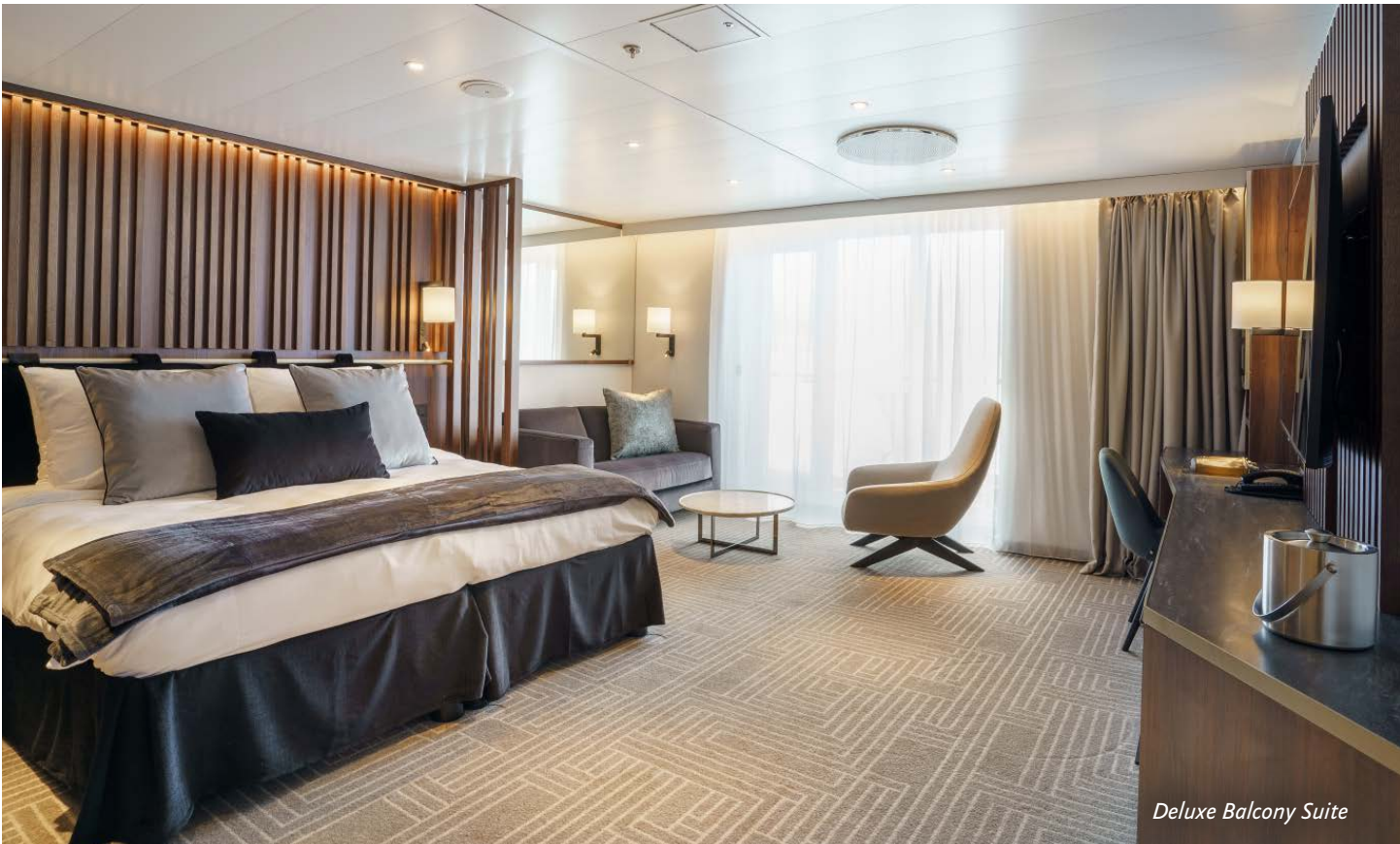
Guests: 199

Lifeboats: 4, fully enclosed

Ice Class: PC6

Visit QuarkExpeditions.com to view deck plan details.





Deluxe Balcony Suite



Sauna



Panorama Lounge



Fitness Center



Balena Restaurant



Included Activities

All of these activities are included in the price of your trip.



Ready for a little adventure beyond your ship? Each Quark Expeditions® voyage offers a variety of recreational activities to enhance your polar experience.

FLIGHTSEEING

While polar landscapes are spectacular from the sea, they're even more stunning from the air, a view you can enjoy while seated in one of the two twin-engine helicopters stationed on *Ultramarine*. Typically in groups of fewer than 10, you will experience an unforgettable aerial tour of the Arctic during a 10- to 15-minute flightseeing excursion that's included in the cost of the voyage. Additional helicopter activities may also be available for purchase on board. Please note: all helicopter operations are weather- and logistics-dependent.

ZODIAC CRUISING

Zodiacs are the workhorses of polar expeditions, taking you to places the ships can't access, allowing you to reach remote shorelines, explore shallow inlets and search for unique wildlife. Expedition staff make stepping in and out of them safe and comfortable, and your Zodiac drivers will provide active interpretation, making the landscape come even more alive.



HIKING

Led by experienced staff, exploring on foot is one of the best ways to appreciate the polar landscapes. Our guides are able to accommodate a range of skill levels to suit every guest.

PRESENTATIONS

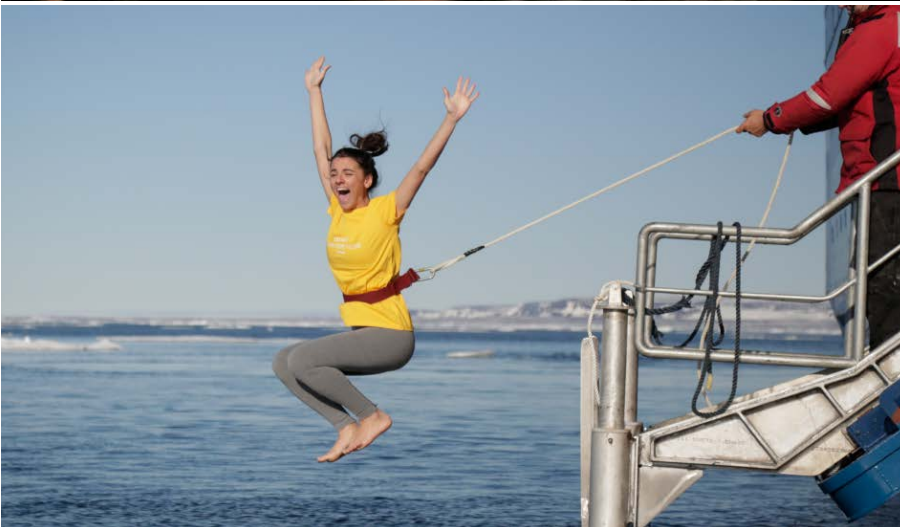
Enjoy daily chats with and presentations by our world-class onboard polar experts—expedition guides, specialists, photography guides and other special guests who will introduce you to the fascinating history, biology, ornithology, glaciology and geology of the region, and much, much more.

POLAR PLUNGE

This rite of passage, scheduled only once per expedition, gives you the chance to jump safely into the bracing Arctic waters under the watchful eye of our staff—and just about every single camera on board!

PHOTOGRAPHY

Documenting your voyage so you can take the memories home is a rewarding experience. Our photography guides will help you hone your skills to capture the beauty of the polar regions.



Contact your Polar Travel Adviser or your Travel Professional for more information about your Included Activities and Adventure Options, including the necessary experience, physical requirements and cost.



Adventure Options

All of these activities cost extra and should be booked in advance of your trip.



SEA KAYAKING

Imagine gliding across the surface of a bay in the presence of icebergs and glaciers. Our Sea Kayaking program is a great way to intimately explore your surroundings. A small group of kayakers will plan to go out multiple times per voyage as an alternative to shore landings or Zodiac cruises.

The number of opportunities to kayak is weather dependent, and will be conducted only during calm conditions. Prior kayaking experience is required, and you must be able to do a wet exit to participate. Beginners interested in kayaking should consider participating in the Paddling Excursion.



PADDLING EXCURSION

If you're interested in kayaking but would like to try something a bit less demanding than Sea Kayaking, you're the perfect candidate to sign up for a one-time paddle on our stable sit-on-top kayaks—perfect for anyone with minimal or no kayaking experience. Small groups of passengers will be taken out on calm days, with our expert guides always present to provide instruction and help you connect with the polar sea. Two groups of 10 will be pre-booked, and once successfully completed, any subsequent outings will be offered via lottery on board.



TUNDRA TO TABLE





Our ground-breaking Tundra to Table experience offers guests a one-of-a-kind adventure into the culinary traditions of the Inuit in Greenland and Nunavut. You'll savor food made with ingredients direct from the sea and surrounding Arctic land—prepared by local chefs. Enjoy an evening of Inuit storytelling as you dine on traditional dishes of the Inuit of Greenland and Nunavut, including beer-braised muskox served with Greenlandic mashed potatoes, and pickled halibut served with lumpfish dip and bread. Our on-ship Tundra to Table experience is the only exclusively Inuit culinary offering of its kind in the world.



Departure Dates

Northwest Passage: The Legendary Arctic Sea Route

ULTRAMARINE

<i>Dates</i>	<i>Days</i>	<i>Start / End</i>	 Flightseeing	 Sea Kayaking	 Paddling Excursion	 Inuit Culinary Experience
ARCTIC 2025						
AUG 26 - SEPT 11, 2025	14	Reykjavik /Calgary	Included	\$	\$	\$
						\$ Paid Activities



Inclusions and Exclusions

Inclusions

RATES INCLUDE:

- Leadership throughout your voyage by our experienced Expedition Leaders, including shore landings and other activities
- All Zodiac transfers and cruising as per the daily program
- All shore landings as per the daily program
- Shipboard accommodation with daily housekeeping
- All meals, snacks, soft drinks and juices on board throughout your voyage (Please inform us of any dietary requirements as far in advance as possible. Unfortunately, the ships' galleys cannot prepare kosher meals.)
- **NEW** Free beer, standard wines, spirits, and cocktails during bar service hours and dinner
- Complimentary coffee, tea and cocoa available around the clock
- Formal and informal presentations by our Expedition Team and guest speakers as scheduled
- A photographic journal documenting the expedition
- A pair of waterproof expedition boots on loan for landings and Zodiac cruising excursions
- An official Quark Expeditions® parka to keep
- Hair dryer and bathrobes in every cabin
- **NEW** Complimentary Wi-Fi service on one device permitting basic Internet browsing, email, posting on social media and voice applications. (Premium packages are available for more data-intensive applications.)
- All miscellaneous service taxes and port charges throughout the program
- All luggage handling aboard the ship
- Emergency Evacuation insurance for all passengers to a maximum benefit of USD \$500,000 per person
- Greenland voyages cruise passenger tax

Exclusions

RATES SPECIFICALLY

DO NOT INCLUDE:

- Mandatory Transfer Package*
- International airfare
- Arrival and departure transfers in Reykjavik
- Passport and visa expenses
- Canadian eTA required for non-Canadian or U.S. visa-exempt passengers
- Government arrival and departure taxes not mentioned above
- Meals ashore unless otherwise specified
- Baggage, cancellation, interruption and medical travel insurance—strongly recommended
- Excess-baggage fees on international and domestic flights
- Mandatory waterproof pants for Zodiac cruising, or any other gear not mentioned
- Laundry, bar and other personal charges unless specified
- Phone charges may vary by location
- Voluntary gratuity at the end of the voyage for shipboard staff and crew
- Additional overnight accommodation
- Adventure Options not listed in Included Activities

*MANDATORY TRANSFER PACKAGE INCLUDES:

- One night's pre-expedition hotel accommodation in Reykjavik
- Group transfer from the Reykjavik hotel to the airport on Day 2
- Charter flight from Reykjavik to Kangerlussuaq
- Group transfer from the Kangerlussuaq airport to the ship on embarkation day
- Group transfer from the ship to the Resolute airport on disembarkation day
- Charter flight from Resolute to Calgary
- Group transfer from Calgary airport to hotel
- One night's post-expedition hotel accommodation in Calgary



Your Expedition Team

Our Expedition Leaders and their teams bring diverse expertise in subjects as varied as polar history, marine biology, glaciology, ornithology and photography. Their knowledge and enthusiasm will greatly enhance your immersion into the polar environment and further deepen your connection to the Arctic.

With over 30 years of experience bringing passengers to remote polar regions and an industry-leading staff-to-guest ratio, we know how to safely handle the unexpected. Ensuring this hard earned experience is passed on, our expedition staff receive comprehensive training in Quark Academy, which provides hands-on polar expedition training prior as part of our onboarding process as well as ongoing training for experienced staff.



Raise a Glass and Stay Connected!

See below for specifics on our complimentary Wi-Fi and bar service, which takes effect November 2024.



Meals on Board

If there is one constant on board, it is that you'll enjoy delicious meals daily. While meal times may change due to landings and wildlife encounters, you'll always be served three well-prepared meals per day. Most dietary restrictions can be accommodated by letting us know prior to your expedition.

Balena Restaurant, the main diningroom on Deck 5 of *Ultramarine*, features tables that accommodate 2 to 10. Guests can enjoy a quiet dinner with a loved one or join a larger table of new friends. Guests will enjoy views from every seat in addition to direct access to the wraparound deck. Guests can also enjoy a meal in Bistro 487, which offers an indoor/outdoor dining experience—perfect for enjoying the polar landscapes.

Breakfasts and lunches are normally served buffet style, while dinners are served plated. À la carte meals are made at the time of your order, allowing our chefs to prepare each dish to your individual needs, ensuring you receive top-quality meals during the course of your expedition.

Complimentary coffee, tea, cocoa and water stations are available around the clock, while soft drinks and juices are available during meals and when the bar is open—all included in the cost of your package.

NEW Enjoy free beer, standard wines, spirits, and cocktails during bar service hours and dinner as part of our new “Raise a Glass and Stay Connected Free” program. Premium wines and champagne are available at extra cost and can be billed to your shipboard account. The well-stocked bars on the ship are open late morning, afternoon and evening, though hours may occasionally change to accommodate the expedition schedule.





Possible Excursions

When traveling in extremely remote regions, your Expedition Team must consider the sea, ice and weather to guide the route and itinerary details. The following sites are a sample of what you may experience on your expedition, whether by ship, Zodiac cruise, or shore landing.

West Greenland

KANGERLUSSUAQ

Kangerlussuaq sits at the head of a 118-mile (190 km) long fjord. The tiny town has Greenland's largest airport and a unique history. Although Inuit and their predecessors occupied or visited the area, Kangerlussuaq's modern incarnation dates back to the U.S. occupation of Greenland as an air force base beginning in World War II.

NUUK

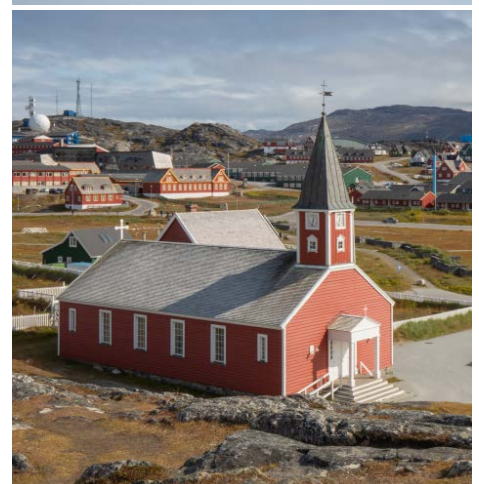
Nuuk is the epicenter of Greenland's fascinating emerging culture. At population 15,000, the world's smallest capital city is a wonderful and curious mix of the traditional and the new.

A particular highlight is the Greenland National Museum, which offers an insight into social change affecting the country from the 1950s onwards. Other exhibits include some of the world's oldest rocks (approx. 3.8 billion years found close to Nuuk), and the Qilakitsoq exhibit displaying the mummified remains of 15th century Inuit women and a six-month old child. The Katuaq Culture Centre and Nuuk Art Museum are also worth exploring.

Canada

ARCTIC BAY

This picturesque and remote community maintains strong ties to the land and sea, as its Inuit inhabitants have lived as nomadic hunters in this region for almost 5,000 years. The protective high hills and sheltered shores of this hamlet make for an ideal nesting habitat for various Arctic birds, including thick-billed murres, kittiwakes, ivory gulls and Ross's gulls. Seals, narwhals and bowhead whales call the waters here home.



BEECHEY ISLAND

Named after Frederick William Beechey, an explorer with the Royal Navy, this is one of Canada's most important Arctic sites and has been deemed a Canadian National Historic Site. During the Franklin expedition of 1845-46, two of Franklin's ships, HMS *Erebus* and HMS *Terror*, anchored here with perilous results. Three of Franklin's crew died here and are buried at marked gravesites.

BELLOT STRAIT

The 1.2 mile (2 km) wide Bellot Strait separates Somerset Island from the Boothia Peninsula. During the transit, you sail past the northernmost point of mainland North America.

CAPE MERCY

In June 1585, British explorer John Davis (he of the Davis Strait) embarked on the first of three voyages to search for the legendary Northwest Passage. In August 1585, he reached this area at the northern

entrance to the Cumberland Sound and named it Cape of God's Mercy. Now known as Cape Mercy, it's the site of a dramatic glacial fjord.

CROKER BAY

A nearby glacier actively calves off chunks of ice, creating a birthing place for icebergs at Croker Bay. The bay was a popular stop during the 1800s, when a path to the Pacific (the Northwest Passage) was at the forefront of Arctic exploration.

FORT ROSS

In 1937, the Hudson's Bay Company established a trading post, named Fort Ross, on the southern coast of Somerset Island. Due to the harsh conditions and isolation of the post, it was closed in 1948. The store and manager's house still stand.



POND INLET

Europeans have been visiting the area that came to be known as Pond Inlet since the 1600s. The first visitors arrived seeking the Northwest Passage. In the 1800s, whalers brought wood and barter goods to the community. These visitors were latecomers, as the indigenous peoples had been living in the region for thousands of years.

PRINCE LEOPOLD ISLAND

Impressive vertical cliffs surround part of this small island. This creates an ideal environment for seabirds, and they nest here in vast numbers—more than 300,000 strong! Thick-billed murres, black guillemots and northern fulmars are most commonly seen here.

QIKIQTARJUAQ

Known until 1998 as Broughton Island, Qikiqtarjuaq sits at the foot of the Baffin Mountains, the highest range east of the Rocky Mountains. From the cape, multitudes of icebergs can be seen coming down Davis Strait, and the rich arctic waters are home to numbers of seals and whales.

RESOLUTE

One of Canada's most northern settlements, Resolute was formed by forceful relocation of Inuit from northern Quebec by the Canadian government in 1953, during the Cold War. Today, it's also a jumping off point for much high Arctic research. It has everything from a grocery store and

cable TV to a school and a couple of hotels. About 200 people live in Resolute throughout the year, where hunting and logistical support to research, mining and tourism contribute to the community's economy.



EXPEDITION SPIRIT

Embracing the unexpected is part of the legacy—and excitement—of expedition travel. When traveling in extremely remote regions, your Expedition Team must consider the sea, ice, wildlife, and weather to guide the route and itinerary details. This itinerary is a tentative outline of what you'll experience on this voyage; please be aware that no specific itinerary can be guaranteed. By the same token, wildlife encounters as described are expected, but not guaranteed. Your Expedition Team will use their considerable experience to seek out wildlife in known habitats, but the presence of any particular species of bird or marine wildlife is not guaranteed.

What to pack on your Greenland expedition

BY SEA AND AIR

All transfers ship to shore, helicopter flights and Zodiac/ship cruising.

- Waterproof pants (mandatory for every Zodiac and helicopter ride)
- Base-layer wool or synthetic top* Mid-layer warm or fleece bottom*
- Base-layer wool or synthetic bottom* Mid-layer warm or fleece top*
- Warm hat that covers ears (bring an extra)
- Scarf, buff, or other face protection
- Warm wool or synthetic socks (keep a dry pair in your bag, and bring extras for layering)
- Waterproof gloves or mitts (bring an extra, lighter pair for hiking)
- Glove liners* Hand and feet warmers* Binoculars
- Polarized sunglasses with UV protection (consider bringing an eyewear retainer: string/clip etc.)
- Sunscreen Ski goggles (for Zodiac cruising on snowy or windy days)
- Waterproof, lightweight backpack or dry sack and/or rain sleeve for camera or a waterproof phone case (to keep camera & gear dry)

*recommended layering depending on the conditions of the day and reflecting your personal thermo-regulation comfort levels.

BY LAND (Shore Excursions and Hiking)

In addition to the gear requirements (as above) mandatory for the transit from ship to shore, it is recommended to bring:

- Worn-in Hiking footwear: While Muck-boots are provided and encouraged for most shore excursions, additional hiking footwear (Goretex-lined boots or similar water-proof hiking boots) can add to your hiking comfort, especially if you are a keen hiker
- (Smart) Wool or synthetic hiking socks for above footwear (bring an extra pair)
- Lightweight and quick-dry, trekking pants that may or may not convert to zip-off shorts* (*depending on your thermo-regulation)
- Breathable waterproof pants* and rain jacket** for outdoor activities in inclement weather (*can be the same pair you use for Zodiac operations / ** can be outer shell of complimentary Quark 3in1 Parka)
- Comfortable long or short-sleeve shirt for hiking either synthetic/quick-dry or merino (smart) wool
- (Hiking) gloves (medium thickness, waterproof preferred)
- Hat, buff or scarf (for wind and weather protection)
- UV protection (hat, polarized sun glasses, sun block, lip balm)
- Collapsible walking sticks for hikes (if required)
Quantities are available to borrow on every vessel
- Additional reusable thermos or water bottle
(in addition to the reusable collapsible water bottle provided)

WHAT TO BRING! Packing for the Polar Regions doesn't have to be daunting, and to make it easier for you, all Quark Expeditions voyages include a Quark parka to keep, and a loan of insulated waterproof boots. Additional suggested items include:

TO WEAR ON BOARD

- Comfortable casual clothing like lighter shirts, pants or jeans, etc. (in case the ship gets warm)
- Comfortable non-slip closed-toed, heelless shoes (flip flops, sandals or slip-on shoes should not be worn on board due to safety concerns)
- Workout attire (for the fitness center and other indoor activities)
- Swimsuit (for the Polar Plunge! Some vessels may also have a pool, hot tub, sauna and/or steam room. See your ship book for details.)

Just a reminder: No formal evening wear required on our voyages but if you would like to bring something a little more dressy for the Captain's welcome and farewell cocktails you may certainly do so!

ADDITIONAL ITEMS

- Passport, visas, immunization records, travel documents, etc. as required
- Camera gear—complete with charger, storage medium, transport & cleaning kit (lens cloth etc.) and extra batteries
- Waterproof cell phone case or rain sleeve for camera
- Earplugs and eye masks for sleeping
- Voltage converters and plug adapters (see ship book for details)
- Moisturizer for face and hands (skin dryness due to wind and temperature changes)
- Seasickness, indigestion, headache, or other medications
- Small amount of local currency (see pre-departure book for more details)
- Insect repellent Mosquito netting



Scan this QR code or [click here](#) to watch our video on what to pack before you go!

- › To view our packing checklist online, visit: [QuarkExpeditions.com/What-to-Pack/Greenland](https://www.quarkexpeditions.com/What-to-Pack/Greenland)
- › Related topics are covered on our Frequently Asked Questions page: [QuarkExpeditions.com/Frequently-Asked-Questions](https://www.quarkexpeditions.com/Frequently-Asked-Questions)

WEATHER CONDITIONS & TEMPERATURES

Polar weather is extremely variable; temperatures may hover around the freezing mark and winds can be strong. The extended daylight warms sheltered areas so that you may sometimes find it warm enough for t-shirts. However, you may encounter rain, snow squalls, fog and white-outs during an expedition and should be ready for any conditions.



The Leader in Polar Adventures

TO BOOK YOUR NEXT ADVENTURE

Contact your Travel Professional
or a Quark Expeditions® Polar Travel Adviser

TOLL FREE AND LOCAL NUMBERS:

North America (Toll Free) **1 888 332 0008**

U.K. Tel **+44 203 514 2712**

U.K. (Toll Free) **0 808 120 2333**

Australia Tel **+61 2 72580333**

Australia (Toll Free) **+61 1800 953518**

France Tel **+33-1 80 14 01 05**

France (Toll Free) **08 05 08 66 46**

QuarkExpeditions.com

Photos captured with a telephoto lens from a responsible distance, following regulatory/AECO guidelines.

PHOTO CREDITS: (over all Expedition Brochures for the Arctic 2025 season):

Acacia Johnson; David Merron; Nicky Souness; Samantha Crimmin; Sam Edmonds; Michelle Sole; Cindy Miller Hopkins; Sue Flood; Hugo Perrin; Peter Lindstrom; Visit Greenland; Nicolas Singh; Rogelio Espinosa; Grange Productions; Fokus Productions; Adobe Stock; iStock

EXPEDITION BROCHURE
September 10, 2024